



SERVER  
SERVE BETTER™

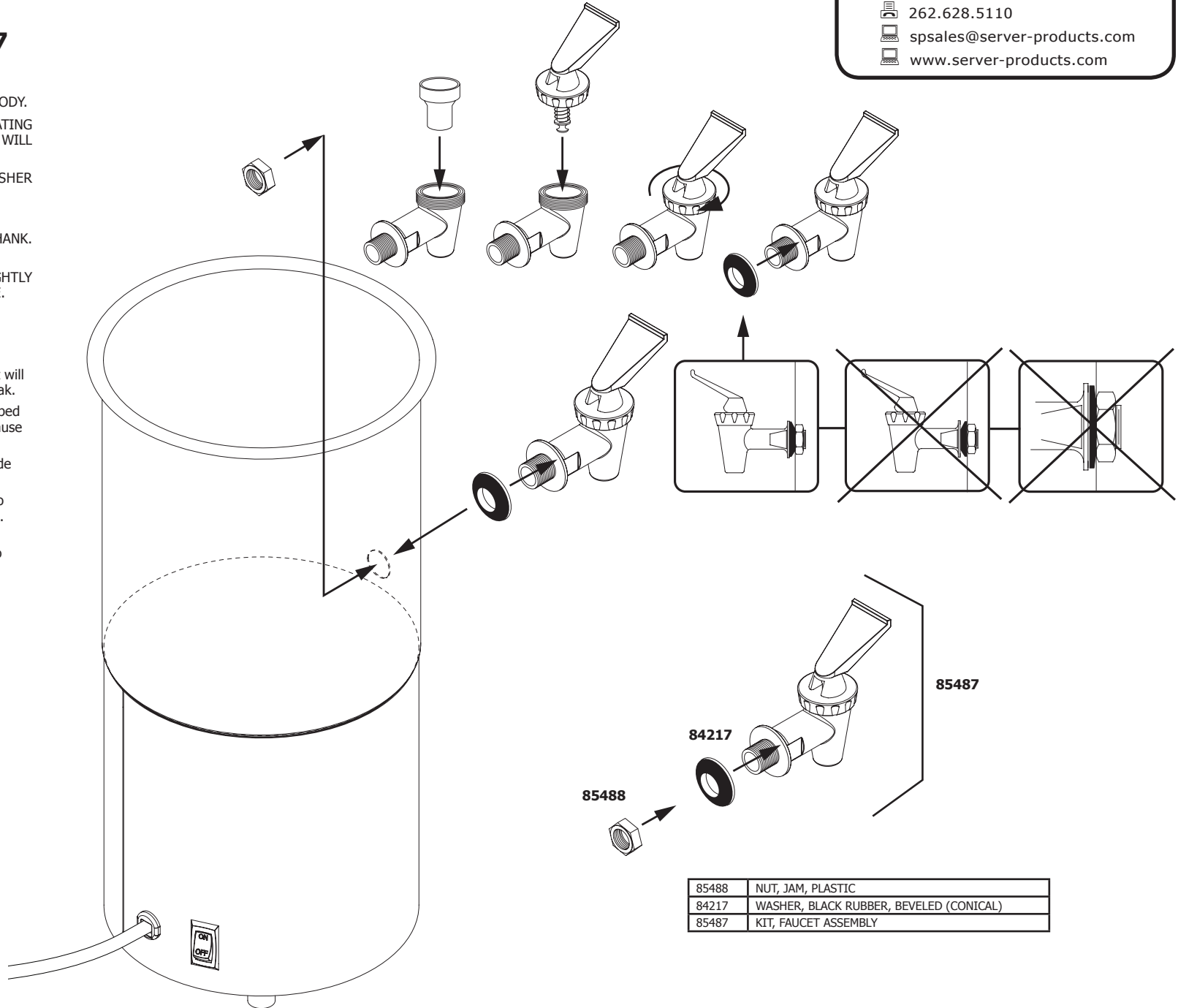
**Server Products Inc.**  
 3601 Pleasant Hill Road  
 Richfield, WI 53076 USA  
 262.628.5600  
 800.558.8722  
 262.628.5110  
 spsales@server-products.com  
 www.server-products.com

## FAUCET ASSEMBLY 85487

- 1 INSTALL CUP SEAT INTO FAUCET STEM.
- 2 INSTALL BONNET ONTO TOP OF FAUCET BODY.
- 3 SECURE BONNET TO FAUCET BODY BY ROTATING BONNET CLOCKWISE. IF BONNET IS WET, IT WILL ASSEMBLE MUCH EASIER.
- 4 INSTALL CONICAL SHAPED RUBBER WASHER ONTO THREADED SHANK OF FAUCET.
- 5 INSTALL FAUCET INTO HOLE.
- 6 INSTALL NUT ONTO FAUCET THREADED SHANK. BE CAREFUL NOT TO CROSS THREAD.
- 7 SECURE NUT, WASHER, AND FAUCET TIGHTLY TOGETHER BY ROTATING NUT CLOCKWISE.

### IMPORTANT:

- Conical shaped rubber washer must be positioned with larger side facing faucet.
- Do not over tighten nut. Overtightening nut will strip faucet threads and cause washer to leak.
- Overtightening nut will squeeze conical shaped washer flat against server vessel and will cause it to leak.
- Conical shaped rubber washer seals on inside of hole.
- It is a flexible seal, therefore it is possible to move or rotate faucet and not create a leak.
- Do not attempt to rotate faucet and flatten conical shaped rubber washer with intent to tighten seal.



85488	NUT, JAM, PLASTIC
84217	WASHER, BLACK RUBBER, BEVELED (CONICAL)
85487	KIT, FAUCET ASSEMBLY