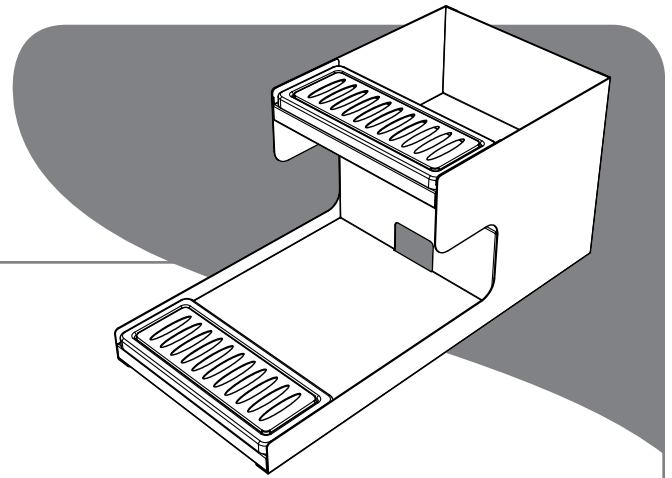




SERVER

EZ-Topper™ & Server Express™ Stand

87851



1 WASH ALL PARTS

before use.

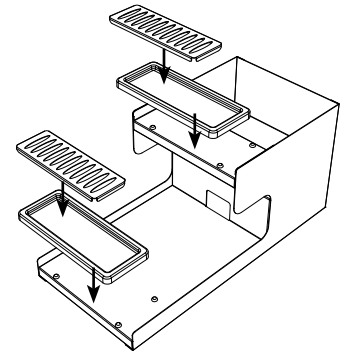
Wipe daily with a clean damp cloth.

Dry with a clean soft cloth.

Glass and surface cleaners approved for use in food contact areas may be used.

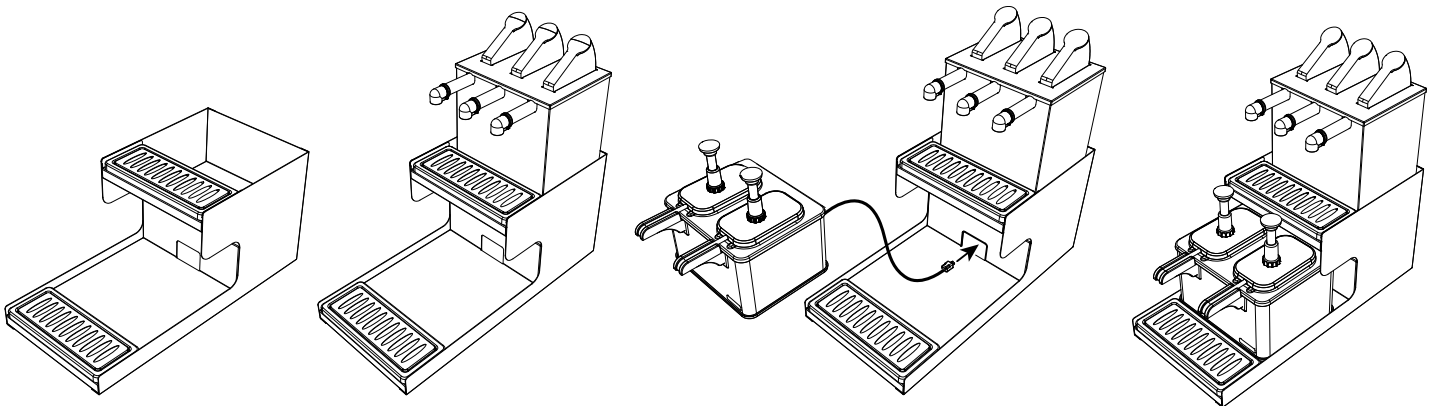
Refer to separate manuals for any equipment being used in stand.

2 INSTALL DRIP TRAYS



3 INSTALL EQUIPMENT ONTO STAND

Insert cord through hole in back of stand.



Server Products Inc.
3601 Pleasant Hill Road
Richfield, WI 53076 USA



262.628.5600 | 800.558.8722



SPSALES@SERVER-PRODUCTS.COM



WWW.SERVER-PRODUCTS.COM

Instruction Sheet 01768-RevA 091015