

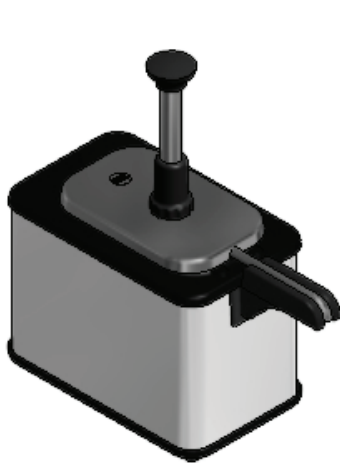
EZ-TOPPER LINE ADDITIONS

Effective immediately, the EZ-Topper™ pouched topping warmer line has been drastically expanded and existing models have been redesigned to provide more options and reduce price. Food product supplied in pouches for heating and dispensing are becoming more readily available due to increased operator interest and these additions to the line will allow Server Products to help meet the market demand.

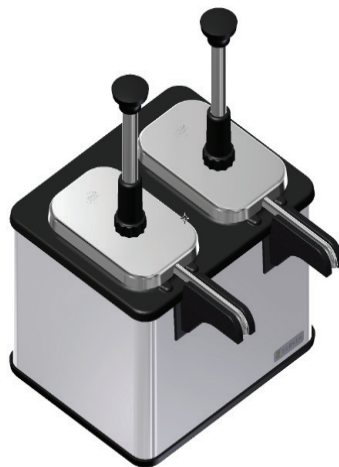
New EZ-Topper™ Models **AVAILABLE JULY 2016**

Part #	EZ-Topper Description	List Price
85880	Single Short with Heated Spout	\$554.00
85920	Twin Short with Heated Spout	\$895.00
85860	Single Tall without Heated Spout	\$565.00

Prices good through 12/31/17



85880
Single Short
with Heated Spout



85920
Twin Short
with Heated Spout



85860
Single Tall
without Heated Spout -
Includes Space for Backup
Pouch, Heating in Reserve

* Short units (85880 & 85920) do **NOT** allow for a backup pouch heating in reserve.

EXISTING EZ-TOPPER MODEL CHANGES

Redesigned Existing EZ-Topper™ Models **AVAILABLE MAY 2016**

Part #	EZ-Topper Description	Old List Price	New List Price
85899	Twin Tall with Heated Spout	\$985.00	\$950.00
85790	Single Tall with Heated Spout	\$798.00	\$634.00

Prices good through 12/31/17

Changes to Existing EZ-Topper™ Models

- Height dimension of both units decrease slightly from 17 ⁷/₈" to 17 ³/₈" while the depth dimension of both units increase from 12 ³/₄" to 14 ³/₈"
- The thermostat knob is now on the back of both units and is the same "pull to rotate - push to set" knob as our FS series warmers
- Pumps on both units come with black knobs installed but do include extra black knobs engraved with "Fudge" and "Caramel"
- On the twin unit, the "Caramel" and "Fudge" that was engraved in the top rear of the warmer has been removed
- Twin unit went from 27 lbs. to 25 lbs. while the Single unit went from 13 lbs. to 14 lbs.

