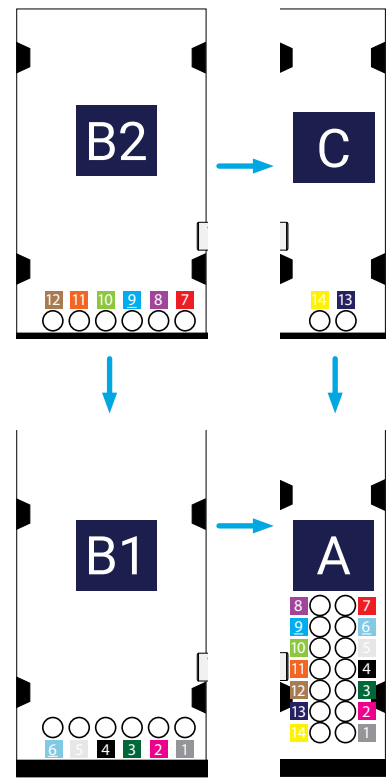
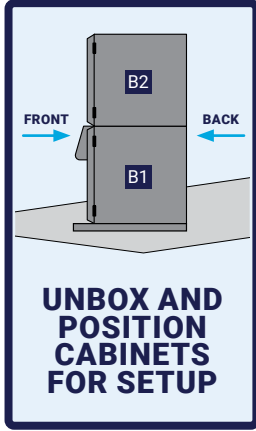


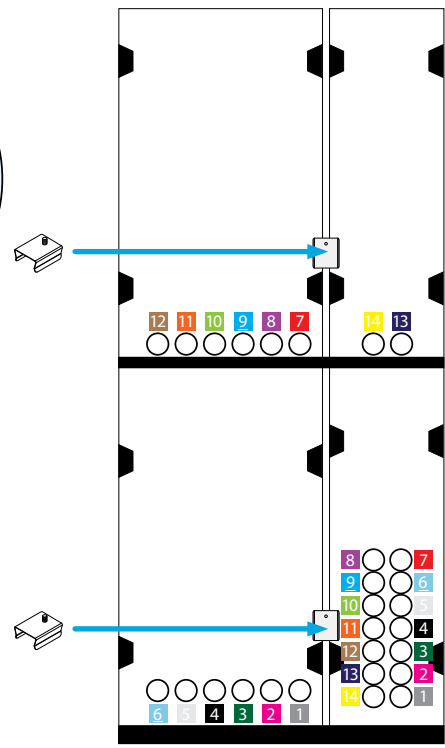
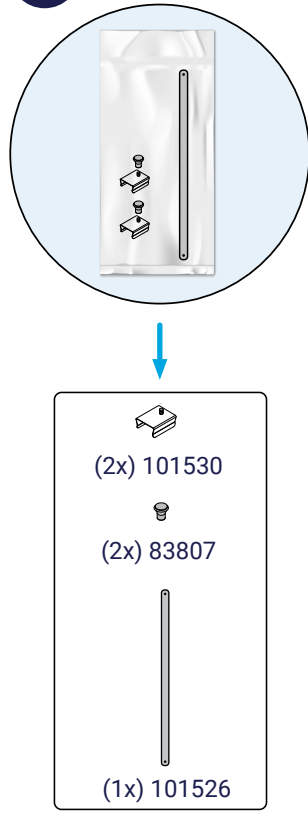
ASSEMBLY

START HERE

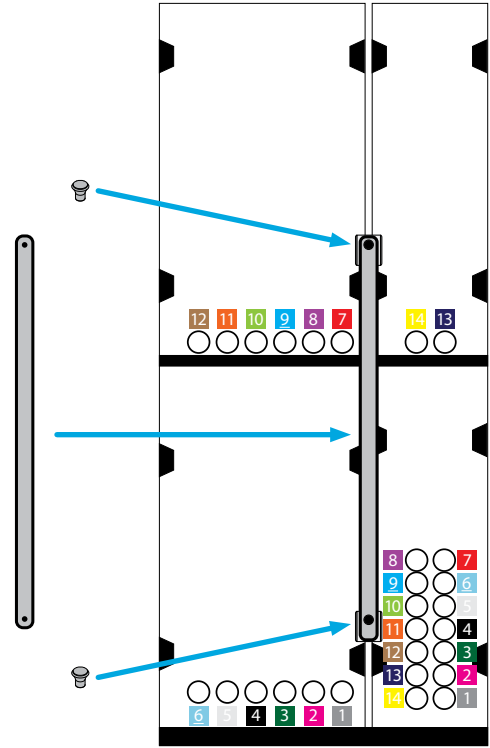
1



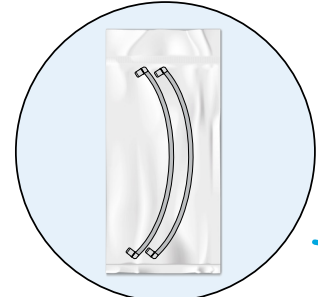
2



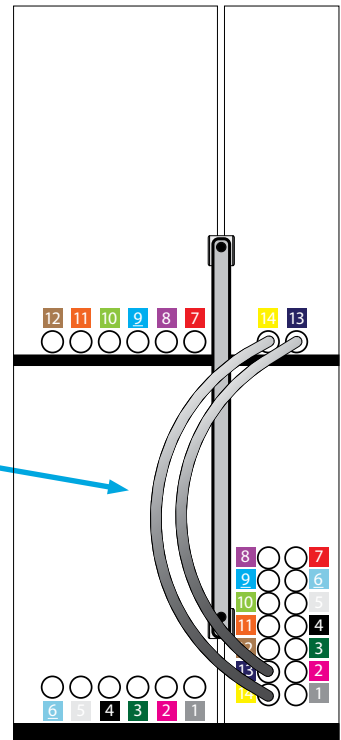
UNIT BACK



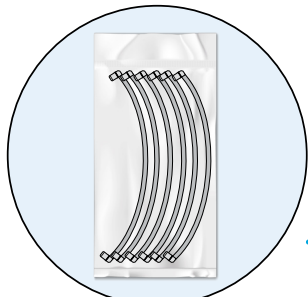
3



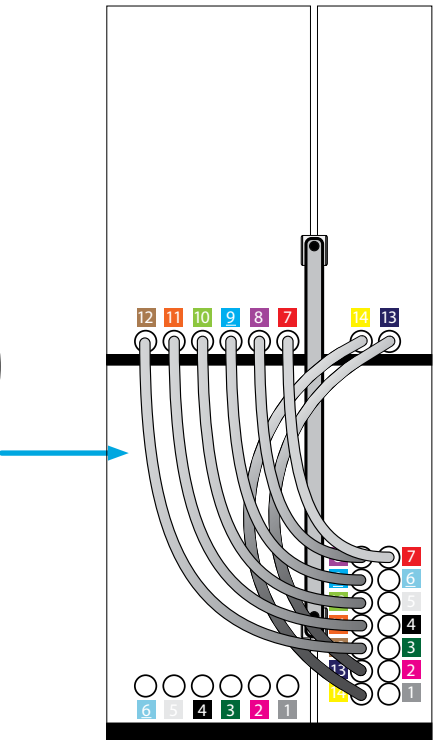
TUBES 13-14



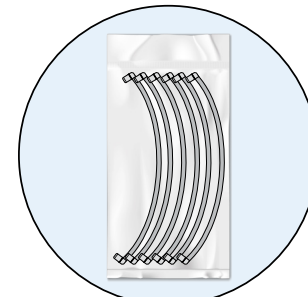
4



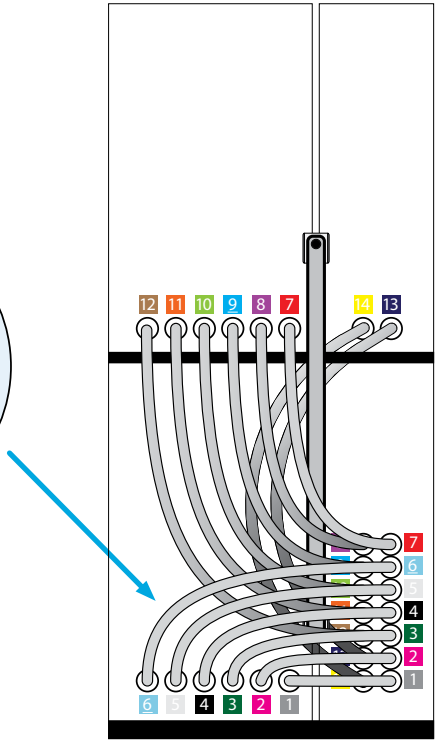
TUBES 7-12



5

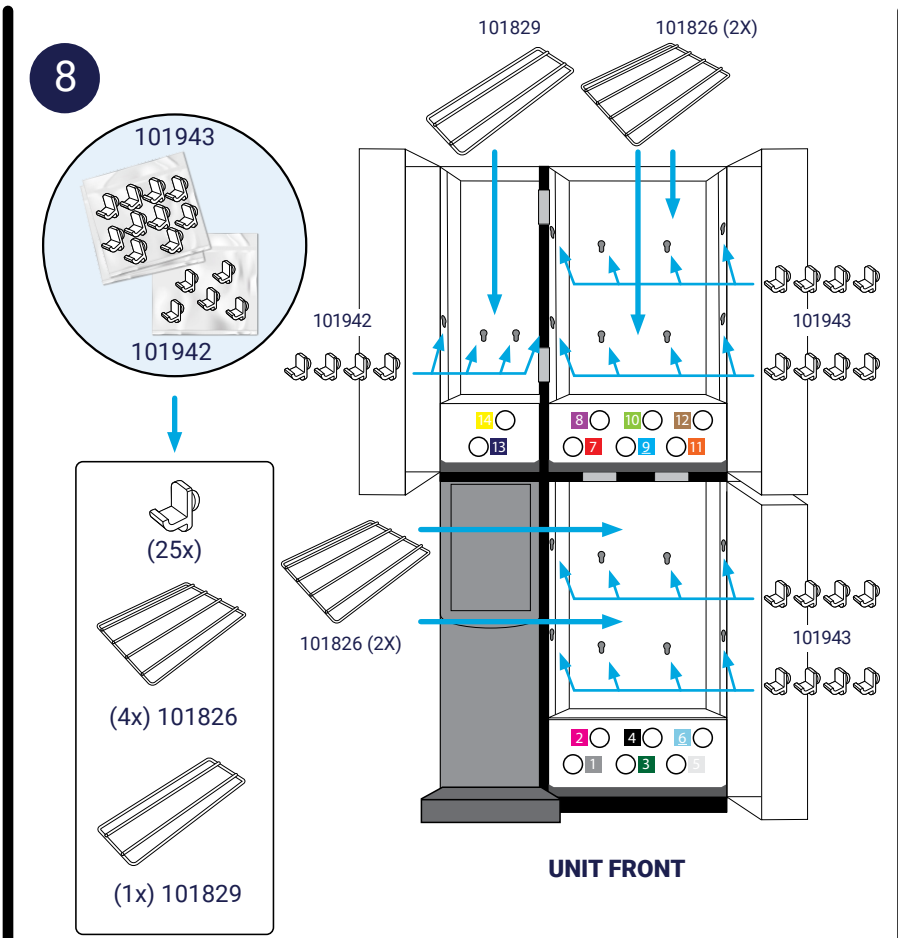
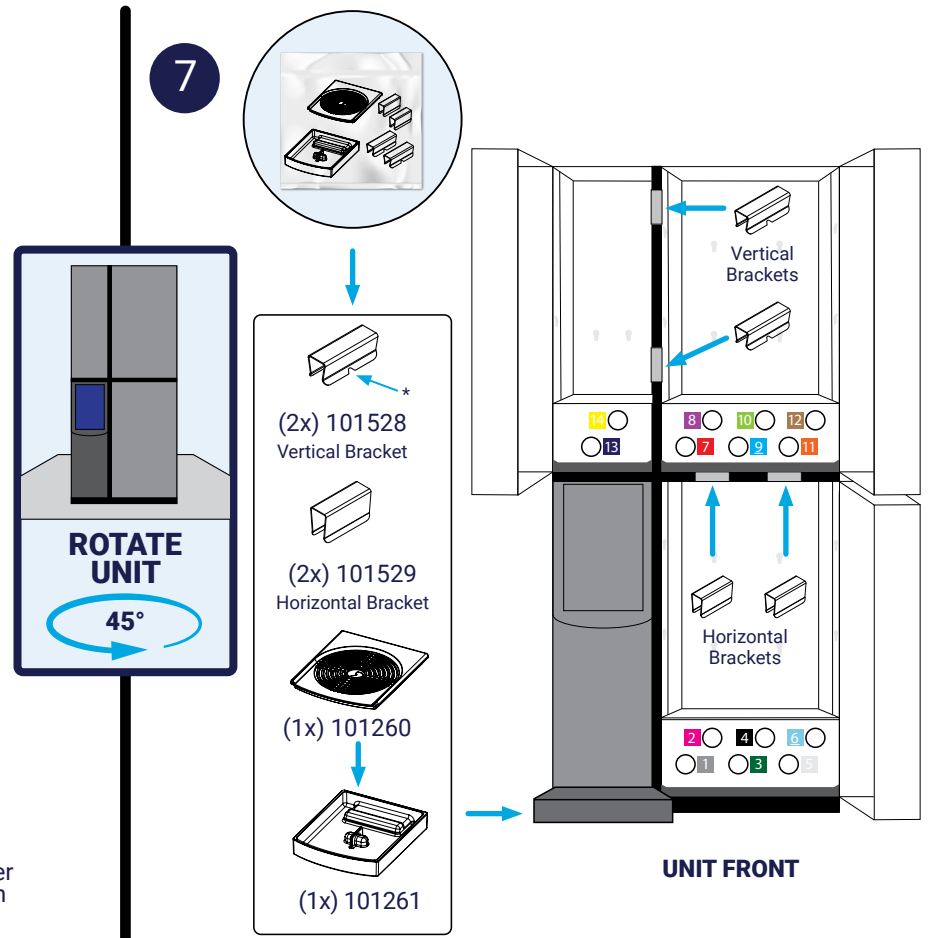
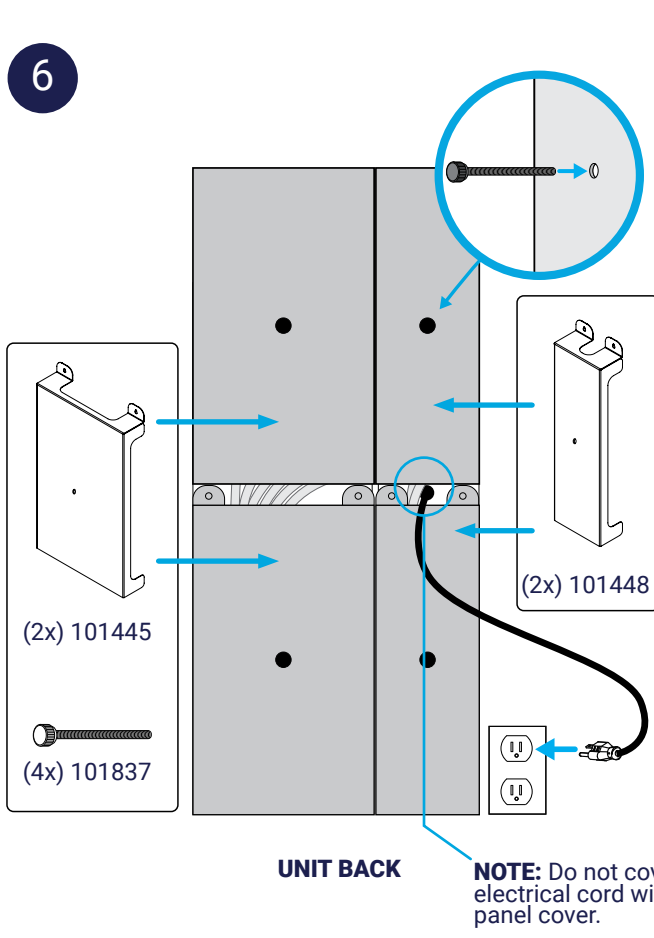


TUBES 1-6



OTHER SIDE





Before starting setup, you will need:

2L of Kay-5 cleaning solution per line or 2L of detergent water solution per line



Empty container for flushed sanitizer/cleaner solution



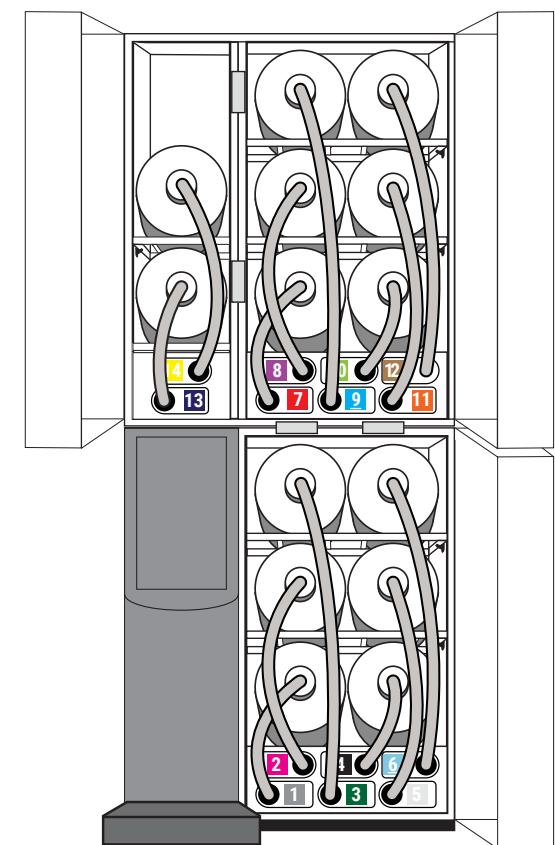
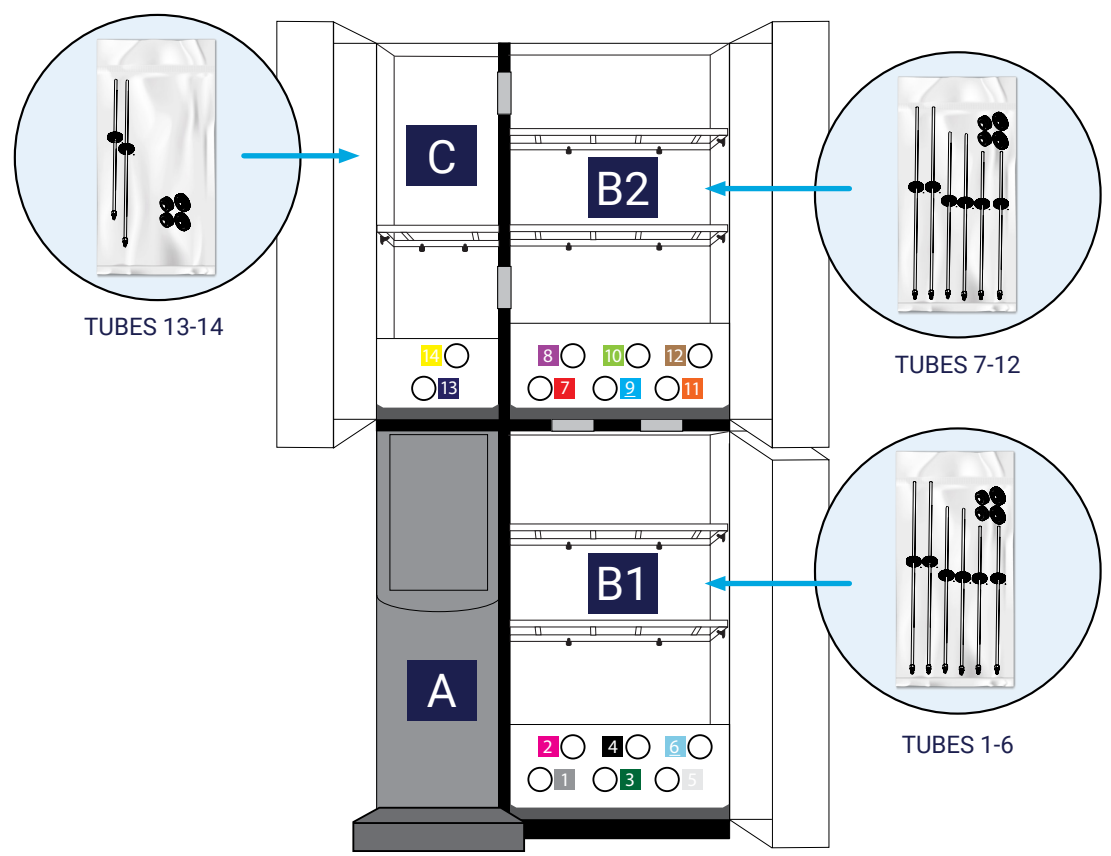
1L of rinse sanitizer per line if cleaning with detergent



Clean, dry towels



Dry erase markers



FOLLOW ONSCREEN SETUP INSTRUCTIONS FOR HOSE CONNECTIONS AND BOTTLE INSTALLATION



Follow prompts to continue.



Scan for Flavor+ Syrup Dispenser Manual or visit https://server-products.com/1xDM_Flavor.pdf