

## QUICK START GUIDE

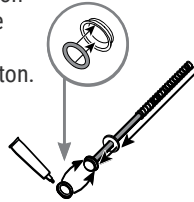
# Stainless Steel Pump

Tips and tricks to help you get started with your new Stainless Steel Pump.

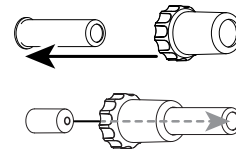
- 1** Remove pump from box and disassemble then wash, rinse, and sanitize all pump parts properly before use.



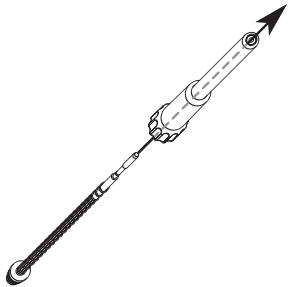
- 2** Install O-ring into seal. Install seal onto piston head. Apply food equipment lubricant on outside of seal. Slide washer onto piston. Slide spring onto piston.



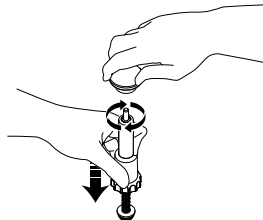
- 3** Slide locking collar towards flared end of head tube. Slide head insert into head tube.



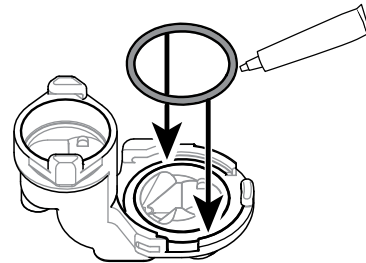
- 4** Insert piston assembly into head tube assembly.



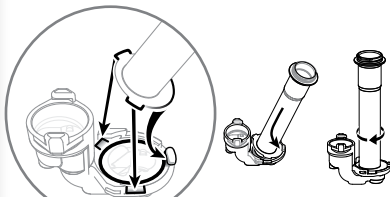
- 5** Install knob. Press head tube down to compress spring and expose piston threads. Rotate knob clockwise to secure.



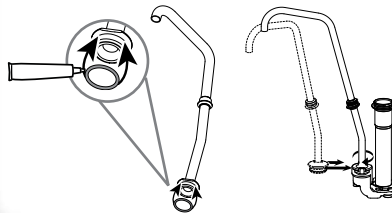
- 6** Install large O-ring into valve body. Apply food equipment lubricant on O-ring.



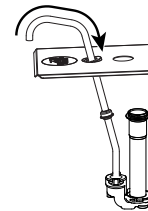
- 7** Install cylinder onto valve body.



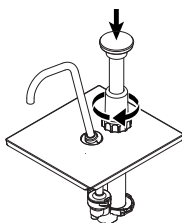
- 8** Install medium O-ring onto discharge tube. Apply food equipment lubricant on O-ring. Install discharge tube onto valve body.



- 9** Install lid by sliding small lid hole over discharge tube. Align center hole with threads on cylinder.



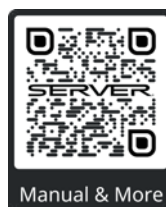
- 10** Install plunger assembly into cylinder. Rotate locking collar clockwise onto cylinder threads to secure.



## WANT TO LEARN MORE?

Visit [server-products.com/manual-more](https://server-products.com/manual-more) for your manual, part breakdown, support videos and more.

[spsales@server-products.com](mailto:spsales@server-products.com) | 800.558.8722



Manual & More

MODEL  
XXXX  
P/N  
#####



SERIES  
##X ##X

**2** YEAR  
WARRANTY

REFERENCE YOUR PART NUMBER  
(P/N) LOCATED ON THE LID OR BASE.