

QUICK START GUIDE

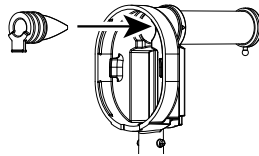
Server Express® Dispenser

Tips and tricks to help you get started with your new Express unit.

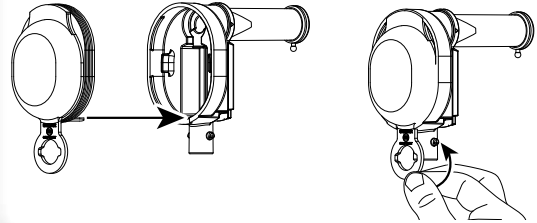
- 1** Remove unit from box and wash all parts properly before use.



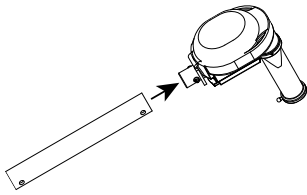
- 2** Squeeze pinch valve open to ensure it isn't stuck shut, then insert into pump housing.



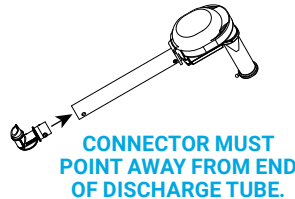
- 3** Press dome into housing fully and wrap loop around lower opening to secure.



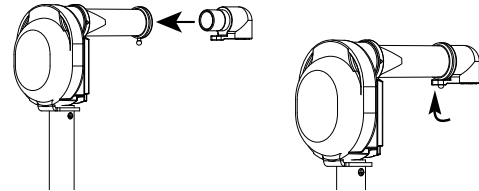
- 4** Install tube by rotating until both pegs on housing fit into holes on tube.



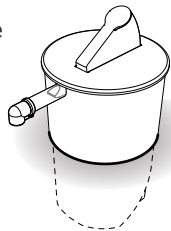
- 5** Install connector by rotating until both pegs on connector fit into holes on tube.



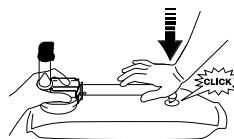
- 6** Insert discharge fitting into discharge tube. Place loop of fitting around peg on end of discharge tube.



- 7** Unit can be used either on a countertop surface or can be dropped into an opening in a countertop. Recommended countertop opening size: 8 1/2" diameter



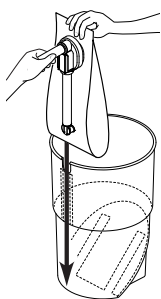
- 8** Firmly press piercing connector into center of pouch fitment.



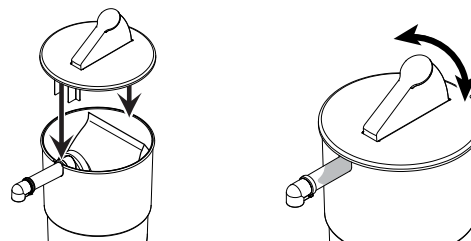
AN AUDIBLE CLICK INDICATES A SECURE CONNECTION.

Prime the pump by pressing the dome to draw food up to the discharge tube.

- 9** Slide pouch and pump into pouch support within vessel. Align pump guides into slots in vessel.



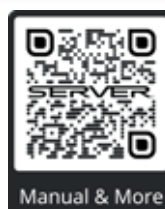
- 10** Place lid on top. If you haven't primed yet, press lever several times until you see product in discharge tube.



WANT TO LEARN MORE?

Visit server-products.com/manual-more for your manual, part breakdown, support videos and more.

spsales@server-products.com | 800.558.8722



Manual & More

MODEL
XXXX
P/N
#####



SERIES
##X ##X

2 YEAR
WARRANTY

REFERENCE YOUR PART NUMBER (P/N) LOCATED ON THE LID OR BASE.