

QUICK START GUIDE

Server Replacement Valve Body Kit

Tips and tricks to help you get started with your new Valve Body Kit.

1

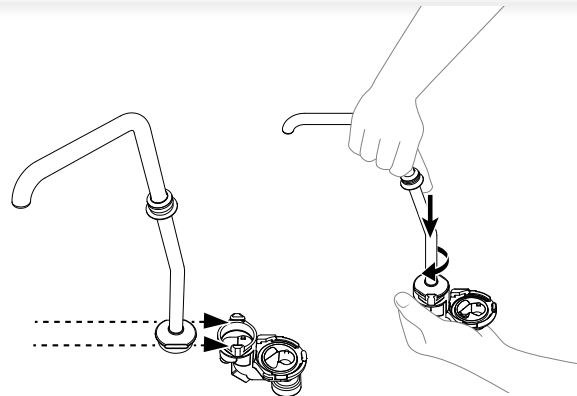
Remove O-ring and valve body from box. Wash, rinse, sanitize, and air dry before use.



Refer to specific pump manual for complete instructions included with your original pump model.

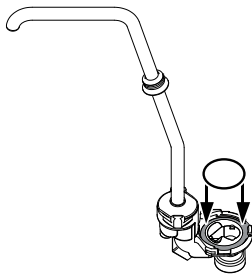
2

Install discharge tube by aligning the flat sides on the bottom of discharge tube with pair of tabs at top of valve body. Push down firmly on discharge tube. Rotate clockwise to fully lock into grooves on valve body.



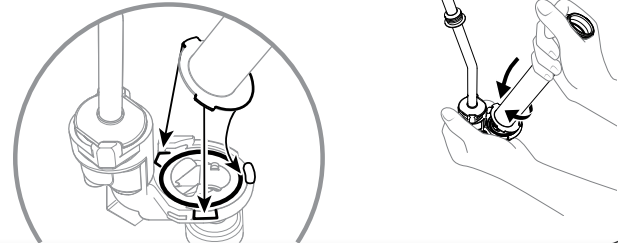
3

Install new O-ring into valve body. Before installing, add a small amount of food equipment lubricant to the O-ring.



4

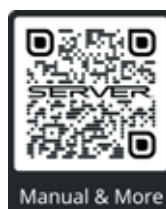
Install cylinder over new O-ring on valve body. Align tabs on cylinder with groove openings. Slide widest section of cylinder flange under the center locking groove. Push down firmly on cylinder. Rotate clockwise to full lock into grooves on valve body.



WANT TO LEARN MORE?

Visit server-products.com/manual-more for your manual, part breakdown, support videos and more.

spsales@server-products.com | 800.558.8722



Manual & More

MODEL
XXXX
P/N
#####



SERIES
##X ##X

2 YEAR
WARRANTY

REFERENCE YOUR PART NUMBER
(P/N) LOCATED ON THE LID OR BASE.