

QUICK START GUIDE

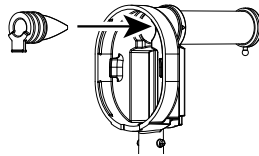
Server Express® Dispenser

Tips and tricks to help you get started with your new Express unit.

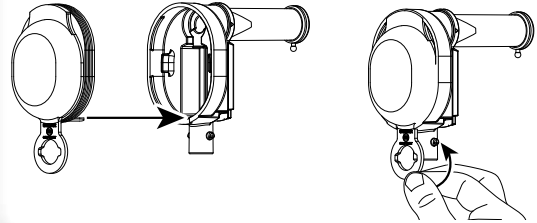
- 1** Remove unit from box and wash all pump parts properly before use.



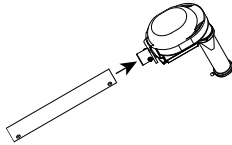
- 2** Squeeze pinch valve open to ensure it isn't stuck shut, then insert into pump housing.



- 3** Press dome into housing fully and wrap loop around lower opening to secure.

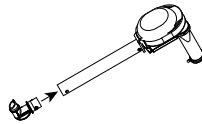


- 4** Install tube by lubricating with a small amount of water and rotate and position until both pegs on housing fit into holes on tube.



- 5** Install connector by lubricating with a small amount of water and rotate and position until both pegs on connector fit into holes on tube.

PRODUCT DISPENSED	CONNECTOR
Ketchup, mustard	CLEAR, 16 mm
Relish	BLACK, 18 mm

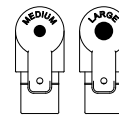


CONNECTOR MUST POINT AWAY FROM END OF DISCHARGE TUBE.

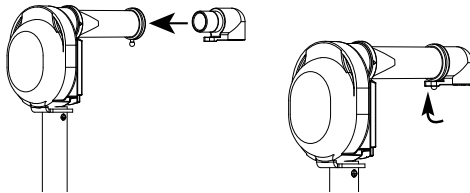
- 6** Verify discharge fitting.

PRODUCT DISPENSED	FITTING
Ketchup, mustard	BLACK, MEDIUM
Relish	BLUE, LARGE

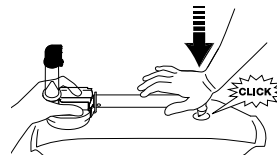
Fittings are marked medium or large on bottom.



- 7** Insert discharge fitting into discharge tube. Place loop of fitting around peg on end of discharge tube.



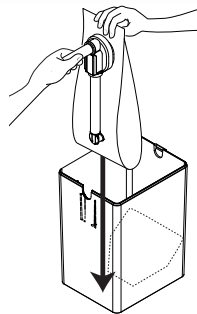
- 8** Firmly press piercing connector into center of pouch fitting.



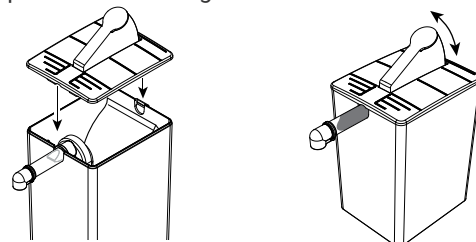
AN AUDIBLE CLICK INDICATES A SECURE CONNECTION.

Prime the pump by pressing the dome to draw food up to the discharge tube.

- 9** Slide pouch and pump into shroud. Align pump guides into slots.

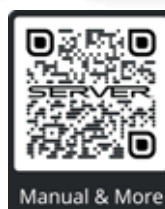


- 10** Place lid on top. Back tab of lid snaps into place. If you haven't primed yet, press lever several times until you see product in discharge tube.



WANT TO LEARN MORE?

Visit server-products.com/manual-more for your manual, part breakdown, support videos and more.
spsales@server-products.com | 800.558.8722



Manual & More

MODEL
XXXX
P/N
#####



SERIES
##X ##X

2 YEAR
WARRANTY

REFERENCE YOUR PART NUMBER (P/N) LOCATED ON THE LID OR BASE.