
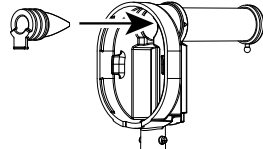
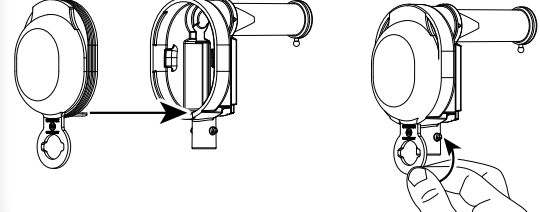
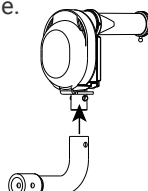
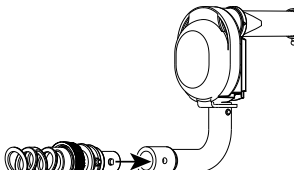
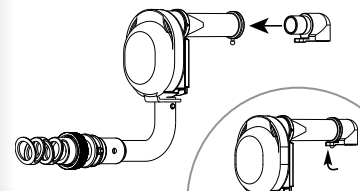
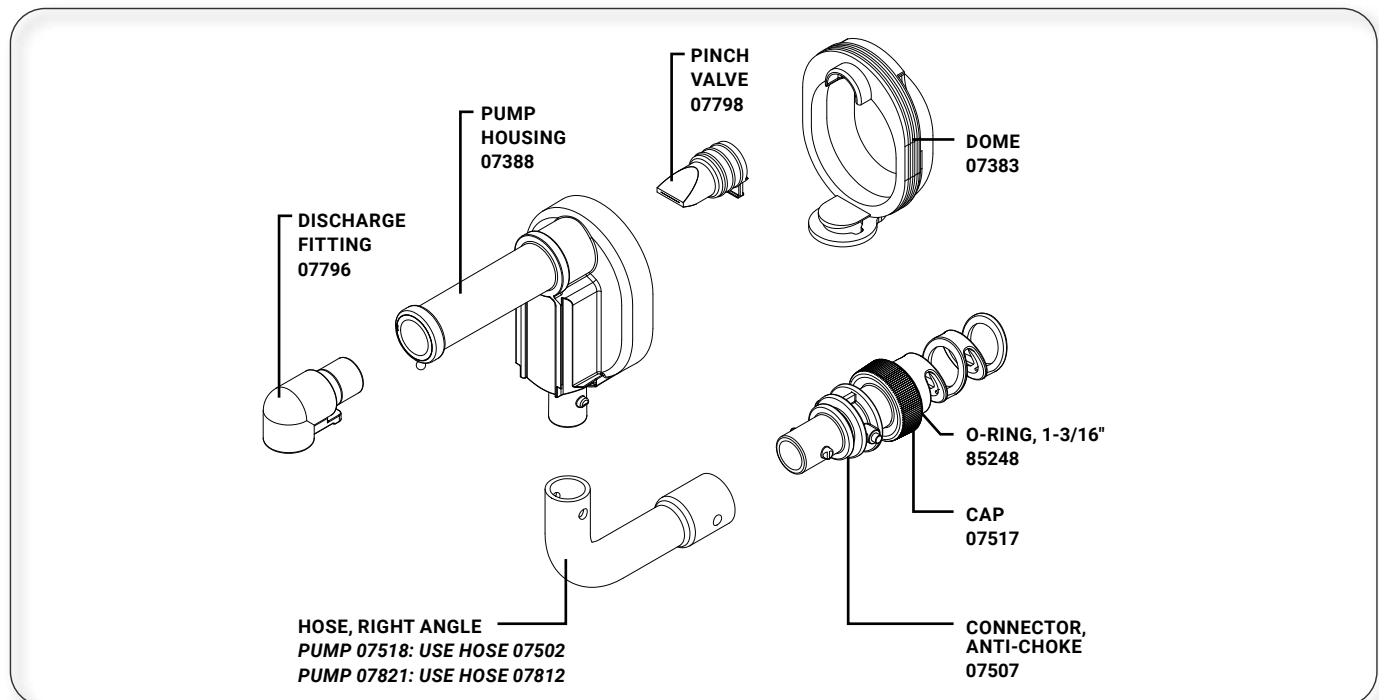


QUICK START GUIDE

Server Extreme™ Pump

Tips and tricks to help you get started with your new Extreme™ pump.

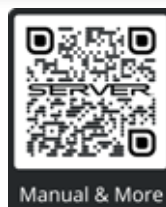
- 1** Remove pump from box and wash all parts properly before use.

- 2** Squeeze pinch valve open to ensure it isn't stuck shut, then insert into pump housing.

- 3** Press dome into housing fully and wrap loop around lower opening to secure.

- 4** Install tube by lubricating with a small amount of water and rotate and position until both pegs on housing fit into holes on tube.

- 5** Lubricate connector with small amount of water and rotate and position until both pegs on connector fit into holes on tube.

- 6** Insert discharge fitting into pump housing discharge tube. Place loop of fitting around peg on end of discharge tube to secure.




WANT TO LEARN MORE?

Visit server-products.com/manual-more for your manual, part breakdown, support videos and more.

spsales@server-products.com | 800.558.8722



MODEL
XXXX
P/N
#####

NSF

SERIES
##X ##X

2 YEAR
WARRANTY

REFERENCE YOUR PART NUMBER
(P/N) LOCATED ON THE LID OR BASE.