



SERVER

Lever Pump Brace

100001

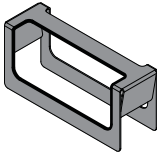
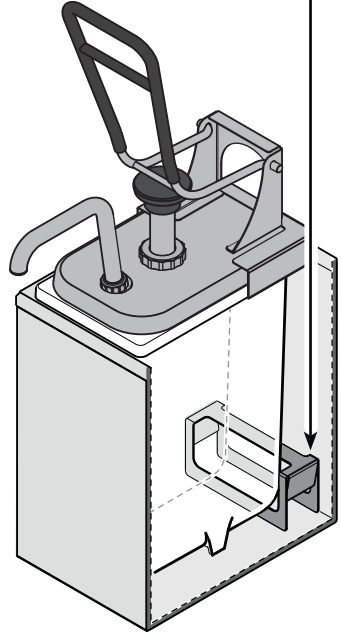
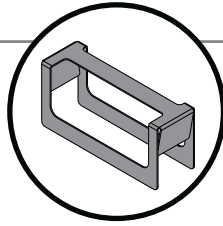
For use in Server non-insulated stations
SR-1, SR-2, SR-3 or SR-4.

SET BRACE INSIDE STATION

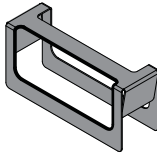
between the back of jar and inside wall
of base.

BRACE IMPROVES FOUNTAIN JAR STABILITY

Without the brace, the force of the
lever pump may cause the jar to tip forward.



SR-1:
Fit jar onto the side
of brace with
DEEPER NOTCH



SR-2, SR-3, or SR-4:
Fit jar onto the side
of brace with
SHALLOWER NOTCH

CLEANING THE BRACE

- Sanitize all parts according to local sanitization requirements. All parts in contact with food must be sanitized.
- External surfaces may be wiped clean with a clean damp cloth.
- Glass and surface cleaners approved for use in food contact areas may be used.
- Do not use abrasive, caustic or ammonia based cleansers.
- Do not use metal scrapers or cleaning pads that could scratch surfaces.

Server Products Inc.

3601 Pleasant Hill Road
Richfield, WI 53076 USA



262.628.5600 | 800.558.8722



SPSALES@SERVER-PRODUCTS.COM
WWW.SERVER-PRODUCTS.COM

Manual #100002-RevA 100218