



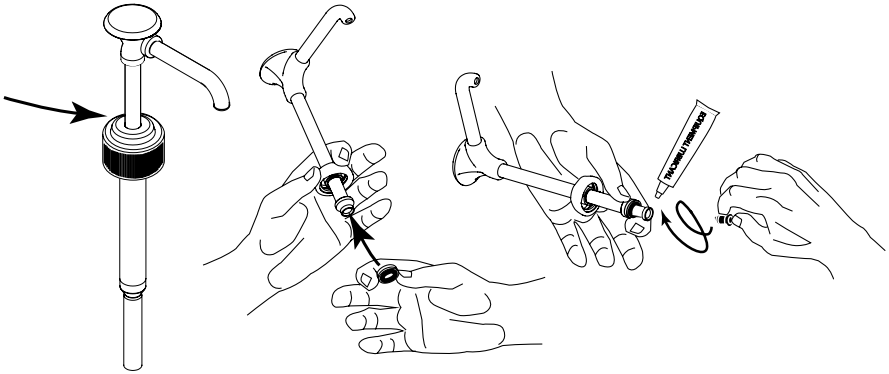
S E R V E R

SERVE BETTER™

REFRESH PARTS KIT BP-1/2 88278

Passare Pump Updates:
Refresh Parts Kit 88278
For Use With Bottle Pump BP-1/2
88254, 88255 & 88256

Part	Model	Qty.	Description
88162	All	9	Seal
88188	All	9	Pinch Valve
88193	82555, 88256	5	Plastic Cap, 28mm
88258	All	4	Ball 5/16"
88263	88254	4	Plastic Cap, 38mm



Enclosed are parts to improve performance of Base, Mocha and Coffee pumps. Please read and follow instructions carefully.

- 1 If coffee is leaking out between discharge tube and locking collar, replace seal on pump.
- 2 If pump has loss of prime (first pump has no liquid), replace pinch valve in bottom of discharge tube.

Note: If balls have been lost in cleaning process, extra balls have been included.

Note: Food Equipment Lubricant should be added to seal after each cleaning, to extend seal life and ensure smooth operation.



Server Products Inc.

3601 Pleasant Hill Road
Richfield, WI 53076 USA



262.628.5600



800.558.8722



262.628.5110



spsales@server-products.com



www.server-products.com