

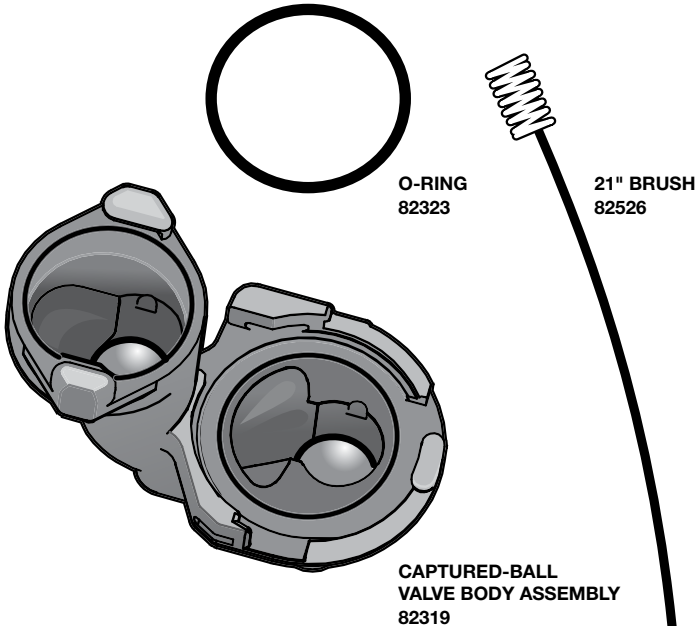


S E R V E R

SERVE BETTER™

# Replacement Valve Body Kit

KIT 82431



O-RING  
82323

21" BRUSH  
82526

CAPTURED-BALL  
VALVE BODY ASSEMBLY  
82319

## ***Thank You***

...for purchasing this Valve Body replacement for your Server Pump. Its captured-ball design ensures they stay put and out of your drain trap.

SERVE PRODUCTS—SERVE BETTER

# REFER TO PUMP MANUAL



Refer to specific pump manual for complete instructions included with your original pump model. Manuals are also available at:

[www.Server-Products.com](http://www.Server-Products.com)



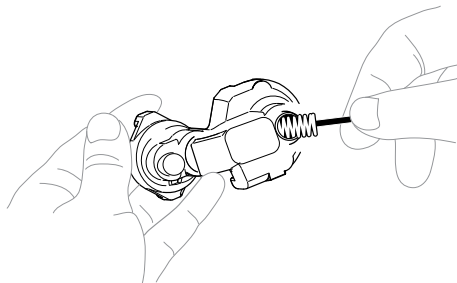
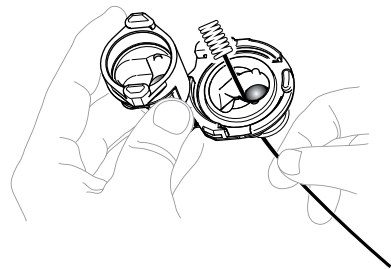
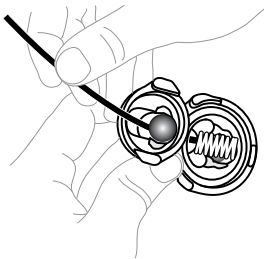
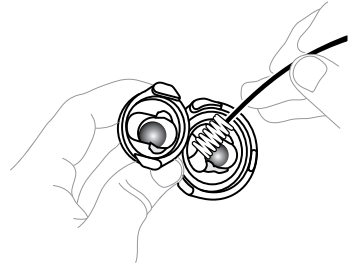
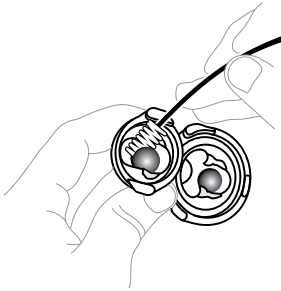
**WASH ALL PARTS PROPERLY BEFORE USE.**

## **IMPORTANT**

Clean, rinse, sanitize, and dry parts daily or regularly to comply with local sanitization requirements.

*Refer to specific pump manual for complete cleaning instructions.*

# IMPORTANT VALVE BODY AREAS TO CLEAN



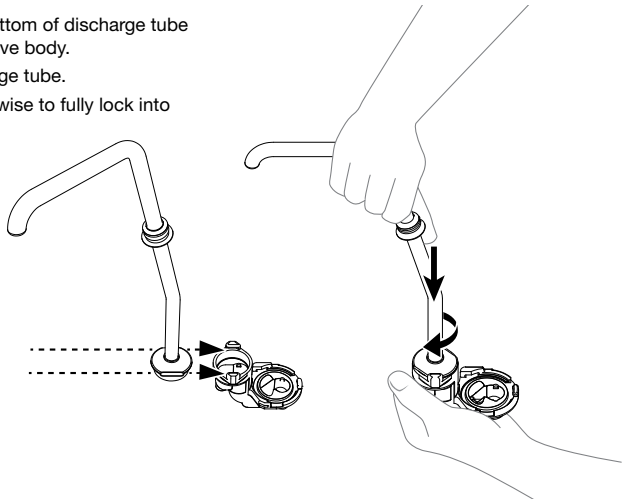
# NEW VALVE BODY INSTALLATION

## 1 INSTALL DISCHARGE TUBE

Align the flat sides on the bottom of discharge tube with pair of tabs at top of valve body.

Push down firmly on discharge tube.

Rotate discharge tube clockwise to fully lock into grooves on valve body.

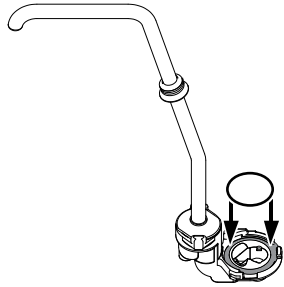
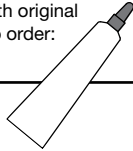


## 2 INSTALL NEW O-RING

into valve body.

**TIP:** Before installing, add a small amount of food equipment lubricant to the o-ring.

Lubricant was supplied with original pump. It's also available to order: Part Number 40179



## 3 INSTALL CYLINDER

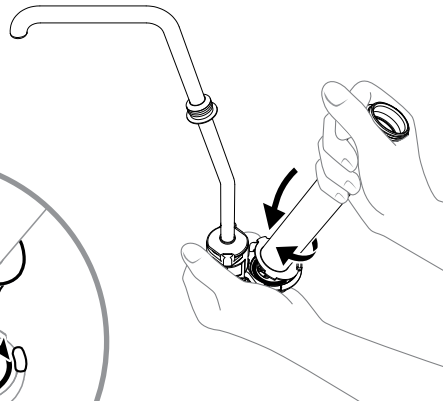
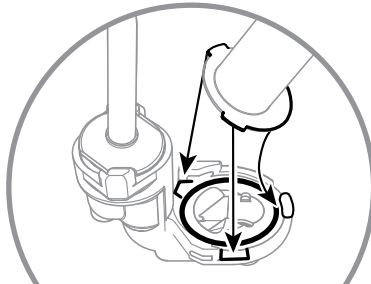
over new o-ring on valve body.

Align tabs on cylinder with groove openings.

Slide widest section of cylinder flange under the center locking groove.

Push down firmly on cylinder.

Rotate cylinder clockwise to fully lock into grooves on valve body.



## SERVER PRODUCTS LIMITED WARRANTY

**2**  
YEAR  
WARRANTY



Server Products equipment is backed by a two-year limited warranty against defects in materials and workmanship.

For complete warranty information go to:

**[www.Server-Products.com](http://www.Server-Products.com)**

## GENERAL SERVICE, REPAIR OR RETURNS

Before sending any item to Server Products for service, repair, or return, contact Server Products customer service to request a **Return Authorization Number**. Merchandise must be sent to Server Products with this number. Service is extremely prompt. Typically, units are repaired and ship out within 48 hours of receipt.

Merchandise being returned for credit must be in new and unused condition and not more than 90 days old and will be subject to a 20% restocking charge.

## HELP or ORDERING REPLACEMENT PARTS

### Server Products Inc.

3601 Pleasant Hill Road  
Richfield, WI 53076 USA



**262.628.5600 | 800.558.8722**



**[SPSALES@SERVER-PRODUCTS.COM](mailto:SPSALES@SERVER-PRODUCTS.COM)**

Examine your pump parts. Certain components may be marked with individual part numbers.

Please contact Customer Service for further assistance