

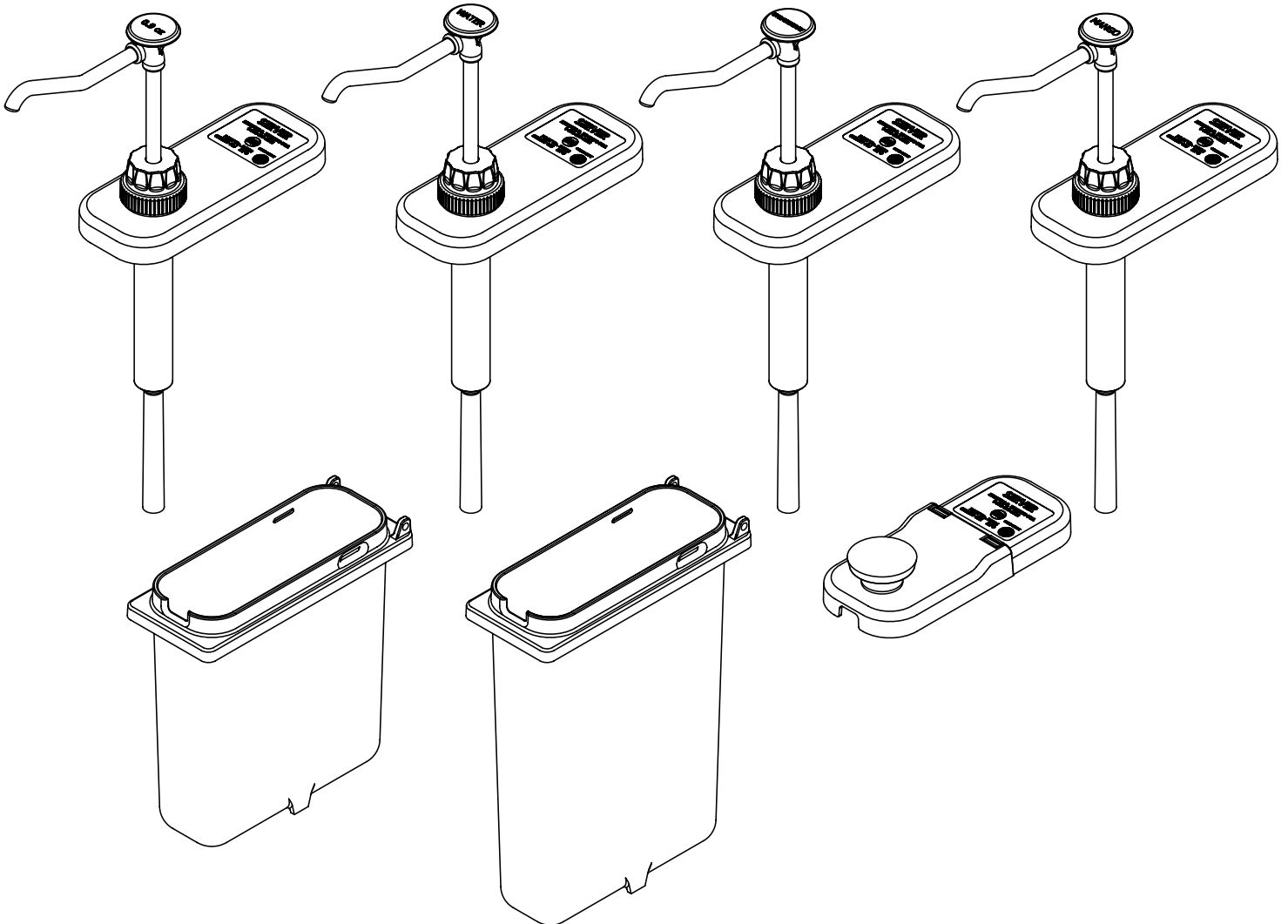


SERVER

SERVE BETTER™

**KIT 81261
SMOOTHIE DISPENSER**

Part	Qty.	Description
81263	2	BP-1 (Bottle Pump), 38MM, 10" DEEP, .9 OZ
81288	1	BP-1 (Bottle Pump), 38MM, 10" DEEP, WATER
81289	1	BP-1 (Bottle Pump), 38MM, 10" DP, STRAWBERRY
81293	1	BP-1, 38MM, 10" DEEP, MANGO
83181	2	JAR, FOUNTAIN, PLSTC, 2/3, SHALLOW
83182	6	JAR, FOUNTAIN, PLSTC, 2/3, DEEP
83214	3	LID ASSEMBLY, PLASTIC, 2/3



SPECIFIC PUMP CLEANING

BEFORE FIRST USE AND AFTER USE DAILY,
DISASSEMBLE AND CLEAN PUMP.

- 1 REMOVE PUMP FROM FOUNTAIN JAR.
- 2 SUBMERGE, FLUSH, RINSE, AND SANITIZE PUMP THOROUGHLY USING THREE COMPARTMENT SINK. OPERATE PUMP A MINIMUM OF 8 TIMES IN EACH SINK.

CLEAN:

- Submerge pump into wash sink. Then place lower end of pump into wash sink and operate pump, to PUMP CLEANING solution through pump, at least 8 times, until all (if any) remaining product is expelled and only the wash water flows through.

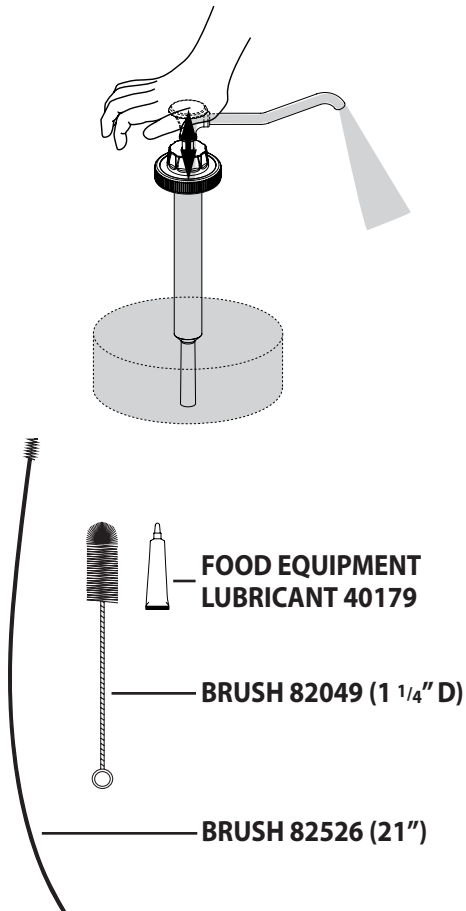
RINSE:

- Submerge pump into rinse sink. Then place lower end of pump into rinse sink and operate pump, at least 8 times, to fully rinse inside of pump.

SANITIZE:

- Submerge pump into sanitizer sink. Then place lower end of pump into sanitizer sink and operate pump, at least 8 times, to fully sanitize inside of pump.
- After submerging, flushing, rinsing, and sanitizing pump, remove pump from sink to disassemble pump.

CLEAN AND FLUSH PUMP WITH SOAP, SANITIZER, AND HOT WATER



PUMP DISASSEMBLY

BEFORE FIRST USE AND AFTER USE DAILY, DISASSEMBLE
AND CLEAN PUMP.

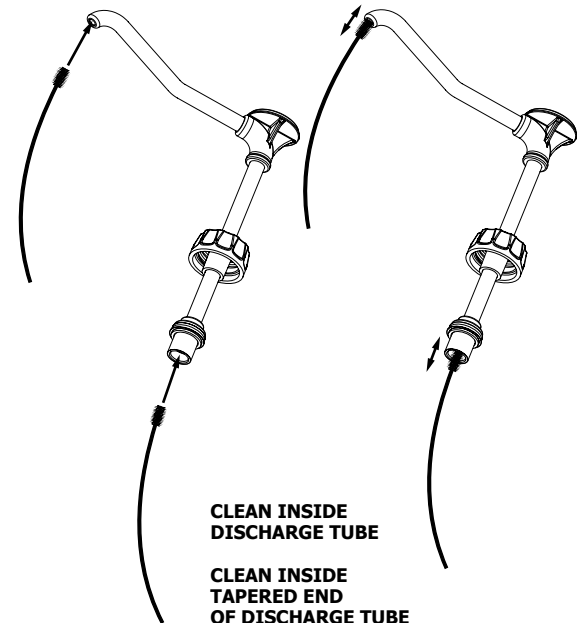
DURING DISASSEMBLY, USE A CONTAINER TO COLLECT
SMALL PARTS OF PUMP TO PREVENT ANY LOSS.

- 1 LOOSEN PLASTIC CAP SECURING PUMP TO LID AND REMOVE PUMP FROM LID.
- 2 LOOSEN LOCKING COLLAR AND REMOVE CYLINDER ASSEMBLY FROM HEAD ASSEMBLY.
- 3 REMOVE SPRING FROM CYLINDER ASSEMBLY.
- 4 REMOVE PINCH VALVE FROM HEAD ASSEMBLY.
 - Pinch and gently turn to pull valve out.
- 5 REMOVE SEAL ASSEMBLY FROM HEAD ASSEMBLY BY PRESSING DOWN AND OFF WITH THUMB.
 - Do not use a sharp tool to remove seal, this may damage seal.
 - If seal is damaged, product will leak past seal.
- 6 REMOVE O-RING FROM INSIDE SEAL.
 - Do not use a sharp tool to remove o-ring, this may damage o-ring.
 - If o-ring is damaged, product will leak past seal.
- 7 REMOVE GAGING COLLAR(S) FROM HEAD ASSEMBLY.

PUMP CLEANING

BEFORE FIRST USE AND AFTER USE DAILY OR REGULARLY, DISASSEMBLE AND CLEAN PARTS. FOR SAFE AND PROPER CARE, AND TO PREVENT CORROSION, OF PARTS, IT IS IMPORTANT TO CLEAN, RINSE, SANITIZE, AND DRY PARTS DAILY OR REGULARLY. FAILURE TO COMPLY WITH ANY OF THESE INSTRUCTIONS MAY VOID UNIT WARRANTY.

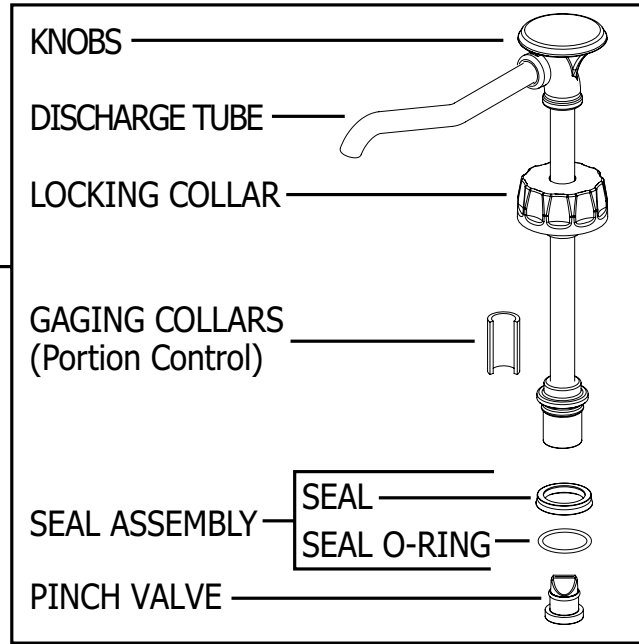
- 1 SEE PUMP DISASSEMBLY.
- 2 WASH CLEAN ALL PARTS WITH DISHWASHING DETERGENT AND HOT WATER.
 - Wash small parts in a pan or other container to prevent part loss.
 - Scrub with supplied brushes to clean all confined areas. Maintain a clean and efficient pump by using the brushes supplied with pump to prevent product build up inside pump.
 - IMPORTANT PUMP AREAS TO CLEAN: Clean inside cylinder thoroughly with brush 82049. Clean inside discharge tube thoroughly with brush 82526.
 - Do not use scrapers, steel pads, steel wool, or other cleaning tools that can scratch surfaces.
 - Mildly abrasive NYLON or brass brush may be used to remove any stubborn food or mineral deposits on interior surfaces of unit.
 - Do not use abrasive cleansers.
 - Do not use caustic cleansers.
 - Do not use cleansing agents with high concentrations of acid, alkaline or chlorine.
 - Do not use ammonia based cleansers.
- 3 FULLY RINSE ALL WASHED PARTS THOROUGHLY WITH CLEAR WATER.
 - To prevent corrosion on parts, it is important to thoroughly and fully rinse washed parts.
- 4 DRY ALL PARTS WITH A CLEAN SOFT CLOTH.
 - Various elements and minerals, such as chlorides in tap water, can accumulate on stainless steel parts and create corrosion.
 - To prevent corrosion on stainless steel parts, it is important to thoroughly and fully dry with a clean soft cloth regularly.
- 5 SANITIZE ALL PARTS FOLLOWING LOCAL SANITIZATION REQUIREMENTS. ALL PARTS IN CONTACT WITH FOOD MUST BE SANITIZED.
 - Allow parts to fully air dry after sanitization.



BOTTLE PUMP PARTS

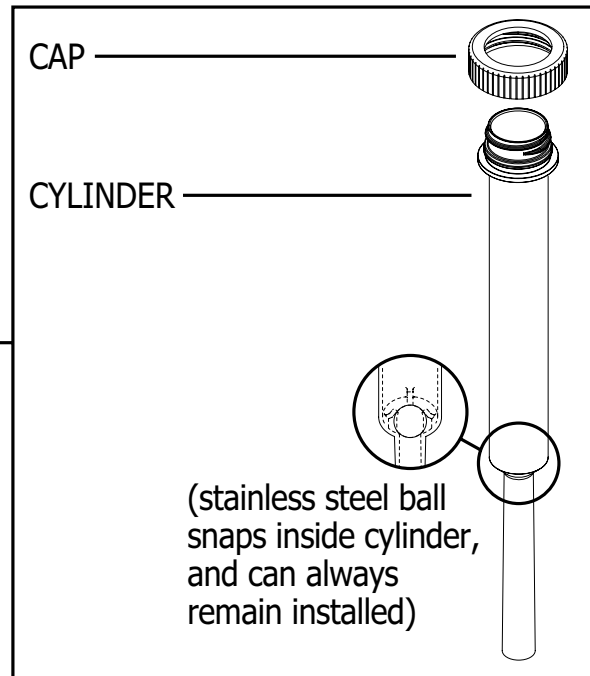
PART	PUMP	DESCRIPTION
06022	ALL	BALL, 1/2" DIAMETER STAINLESS STEEL
81262	ALL	LID
81264	81263	GAGING COLLAR - .9 OZ
81267	81263	HEAD ASSEMBLY - .9 OZ
81286	81288	HEAD ASSEMBLY - WATER
81287	81288	GAGING COLLAR - WATER
81291	81289	HEAD ASSEMBLY - STRAWBERRY
81292	81289	GAGING COLLAR - STRAWBERRY
81294	81293	HEAD ASSEMBLY - MANGO
81295	81293	GAGING COLLAR - MANGO
82182	ALL	O-RING, 13/16", SILICONE
83003	ALL	SEAL ASSEMBLY
83021	ALL	SEAL, PISTON
88016	ALL	CAP, PLASTIC, 38MM
88166	ALL	SPRING ASSEMBLY
88202	ALL	PINCH VALVE
88496	ALL	CYLINDER ASSEMBLY

HEAD ASSEMBLY

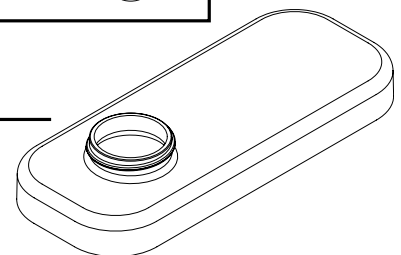


SPRING

CYLINDER ASSEMBLY



LID



SAFETY GUIDELINES

According to food and safety regulations, most foods must be stored and/or served at certain temperatures or they could become hazardous. Check with local food and safety regulators for specific guidelines.

Be aware of the product you are serving and the temperature the product is required to maintain. Server Products, Inc. can not be responsible for the serving of potentially hazardous product.



NSF International (National Sanitation Foundation) lists this pump as: "Not acceptable for dispensing potentially hazardous foods."

Stainless steel is one of the best materials for food serving and storage, but there are many products which can corrode it. If you notice corrosion beginning on any stainless steel surface, you may need to change the cleansing agent, sanitizing agent, or the cleaning procedures you are using.

- Products containing: acids, alkalines, chlorine, or salt can corrode stainless steel.
- Sauerkraut and Au Jus sauces corrode stainless steel. Server Products, Inc. regrets that we can not honor Warranty claims on stainless steel parts that have been affected by sauerkraut or Aus Jus.

TROUBLESHOOTING FOR PUMP

Pump dispenses little or no product:

- **Ensure pinch valve is properly installed into bottom of head assembly.**
- **Ensure ball is snapped in place down inside cylinder.**
- **Product may be too stiff or contain a solid that will not pass through pinch valve.**

Product oozes out around locking collar:

- **Ensure seal is securely installed onto head assembly piston. Ensure flared edge of seal is facing down towards bottom of piston.**

Pump head assembly does not return to top of stroke after dispensing product:

- **Inspect spring for any damage. If bent or broken, spring may cause permanent damage to cylinder. Replace spring if necessary.**

Pump drips:

- **Clean head assembly discharge tube with smaller bristled brush.**
- **Ensure product is not being heated by any external source(s) causing product to expand and drip from pump.**

Portion control is not consistent:

- **Inspect gaging collar for any damage, verify that it is the correct one, and is installed properly onto head assembly piston.**
- **Inspect pinch valve for any damage. Replace if necessary.**
- **Ensure ball is snapped in place down inside cylinder.**

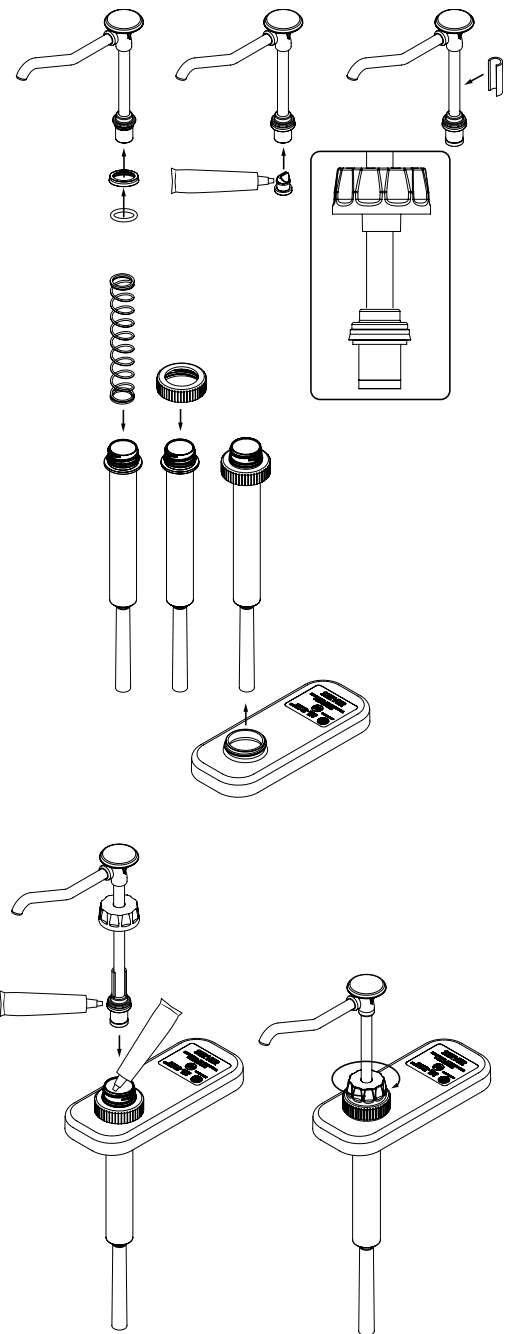
Problems with pump operation and/or flow:

- **Replace seal if necessary.**
- **Replace cylinder assembly if necessary.**
- **Clean pump.**

PUMP ASSEMBLY

ALWAYS CLEAN PUMP THOROUGHLY BEFORE EACH USE AND AFTER USE DAILY. SEE PUMP DISASSEMBLY AND PUMP CLEANING.

1. **INSTALL SEAL O-RING INSIDE SEAL.**
 - Apply food equipment lubricant on seal o-ring.
2. **INSTALL SEAL ASSEMBLY SECURELY ONTO HEAD ASSEMBLY PISTON.**
 - Apply food equipment lubricant inside seal assembly.
 - Flared end of seal assembly should be facing away from piston head.
 - If seal is installed incorrectly, product will leak past seal.
3. **APPLY A SMALL AMOUNT OF FOOD EQUIPMENT LUBRICANT INSIDE BOTTOM OF HEAD ASSEMBLY PISTON. THEN INSTALL PINCH VALVE INTO BOTTOM END OF HEAD ASSEMBLY PISTON.**
 - Rotate pinch valve inside head assembly piston to spread lubricant evenly inside end of head assembly piston. Then position pinch valve securely into a sealed position on end of head assembly piston.
4. **INSTALL GAGING COLLAR ONTO SIDE OF HEAD ASSEMBLY PISTON.**
5. **INSTALL SPRING INTO CYLINDER.**
6. **INSTALL CAP BY SECURELY SNAPPING IT ONTO CYLINDER, PAST THREADING.**
7. **INSTALL LID BY SLIDING LID UP FROM BOTTOM OF CYLINDER TO ALIGN WITH CAP. SECURE PUMP TO LID BY TIGHTENING CAP TO LID THREADING.**
8. **APPLY A SMALL AMOUNT OF FOOD EQUIPMENT LUBRICANT INSIDE TOP OF CYLINDER AND TO OUTSIDE SURFACE OF SEAL.**
9. **INSTALL HEAD ASSEMBLY PISTON INTO CYLINDER.**
10. **SLIDE LOCKING COLLAR DOWN ONTO CYLINDER THREADING AND TIGHTEN TO SECURE HEAD ASSEMBLY TO CYLINDER.**
11. **PREPARE PUMP FOR USE.**
 - Operate pump several times until only product, without air bubbles, is delivered with each stroke of pump.



GENERAL SERVICE, REPAIR, OR RETURNS

Before sending any item to Server Products for service, repair, or return, contact Server Products customer service to request a **Return Authorization Number**. Merchandise must be sent to Server Products with this number.

Merchandise being returned for credit must be in new and unused condition and not more than 90 days old and will be subject to a 20% (percent) restocking charge. Electrical parts (thermostats, heating elements etc.) are not returnable.

Server Products maintains a fully staffed service department with highly skilled factory trained personnel. Service is extremely prompt. Under normal circumstances, a repaired unit is shipped out the day after it is received. Labor charges are reasonable.

SERVICE

Contact dealer or Server Products Inc. customer service department for the following:

ORDERING REPLACEMENT PARTS
Be prepared to give this information:

- MODEL Letters/Name/Numbers
- Part Numbers- P/N
- Series Numbers/Letters
- Part Description

This information and other important data is stamped on the lid or cylinder of pumps or on the bottom or back side of every unit.

SERVER PRODUCTS LIMITED WARRANTY

All Server Products equipment is backed by a two-year limited Warranty against defects in materials and workmanship. For complete Warranty information go to: www.server-products.com

Server Products Inc.
3601 Pleasant Hill Road
Richfield, WI 53076 USA

262.628.5600

800.558.8722

262.628.5110

spsales@server-products.com

www.server-products.com